

## TECSEDO® PANELS - HARDWARE COMPONENTS BY

### HARDWARE FLEXIFORCE® developed for TECSEDO® Panels:

#### End caps / Double

- **40TL500L** - Tecsedo panel 40mm/ 500mm, double
- **40TL500R** - Tecsedo panel 40mm/ 500mm, double
- **40TL610L** - Tecsedo panel 40mm/ 610mm, double
- **40TL610R** - Tecsedo panel 40mm/ 610mm, double

#### End caps / Single

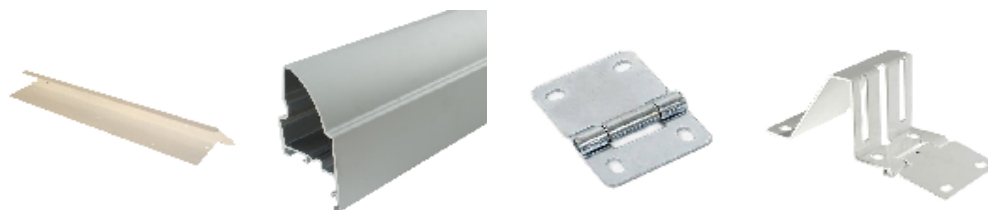
- **40TM500L** - Tecsedo panel 40mm/500mm, single
- **40TM500R** - Tecsedo panel 40mm/ 500mm, single
- **40TM500WL** - Tecsedo panel 40mm/500mm, single
- **40TM500WR** - Tecsedo panel 40mm/500mm, single
- **40TM610L** - Tecsedo panel 40mm/ 610mm, single
- **40TM610R** - Tecsedo panel 40mm/ 610mm, single
- **40TM610WL** - Tecsedo panel 40mm/ 610mm, single
- **40TM610WR** - Tecsedo panel 40mm/ 610mm, single
- **40TS500L** - Tecsedo panel 40mm / 500mm, single, W = 67mm, left
- **40TS500R** - Tecsedo panel 40mm / 500mm, single, W = 67mm, right
- **40TS500WL** - white, Tecsedo panel 40mm/ 500mm, single
- **40TS500WR** - white, Tecsedo panel 40mm/ 500mm, single
- **40TS610L** - Tecsedo panel 40mm / 500mm, single, W = 67mm, right
- **40TS610R** - Tecsedo panel 40mm / 610mm, single, W = 67mm, right

#### Full vision / Alu profile

- **A3MB5080** – Lower profile
- **A3MB7200** – Lower profile
- **A4MB7200** – Upper profile

#### Hardware boxes / Intermediate hinges

- **RBOX420H** - 5x420HZ+10RES



## TECSEDO<sup>®</sup> PANELS - HARDWARE COMPONENTS BY

### HARDWARE FLEXIFORCE<sup>®</sup> developed for TECSEDO<sup>®</sup> Panels:

#### Hardware boxes / Side hinges

- **RBOX420R** - 8x420RZ+10RES + 8x450SZ
- **RBOX420R2** - 10x420RZ+10RES + 10x450SZ

#### Hinges / Intermediate

- **420HZ10R** - 10mm raised top blade
- **420HZW10R** - 10mm raised top blade
- **424HZ10R** - 10mm raised top blade
- **424HZW10R** - 10mm raised top blade

#### Hinges / Side

- **420FZ** - Non adjustable, for tandem roller 595RES(15)
- **420FZW** - Non adjustable, for tandem roller 595RES
- **424CZ10R** - adjustable, 10mm raised top blade
- **424CZW10R** - adjustable, white, 10mm raised top blade
- **424FZ** - Non adjustable, for tandem roller 595RES
- **424FZW** - Non adjustable, for tandem roller 595RES
- **424RZ10R** - 10mm raised top blade
- **424RZW10R** - 10mm raised top blade, white
- **420CZ10R** -adjustable, 10mm raised top blade complete, 11mm
- **420CZW10R** -adjustable, white, 10mm raised top blade complete, 11mm
- **4240RZ10R** - adjustable, 10mm raised top blade base
- **4240RZW10R** - adjustable, white, 10mm raised top blade base

#### Windows / RES

- **2240CL** - rectangular, plastic, RES, panel 40-42mm
- **2240GR** - rectangular, plastic, RES, panel 40-42mm

